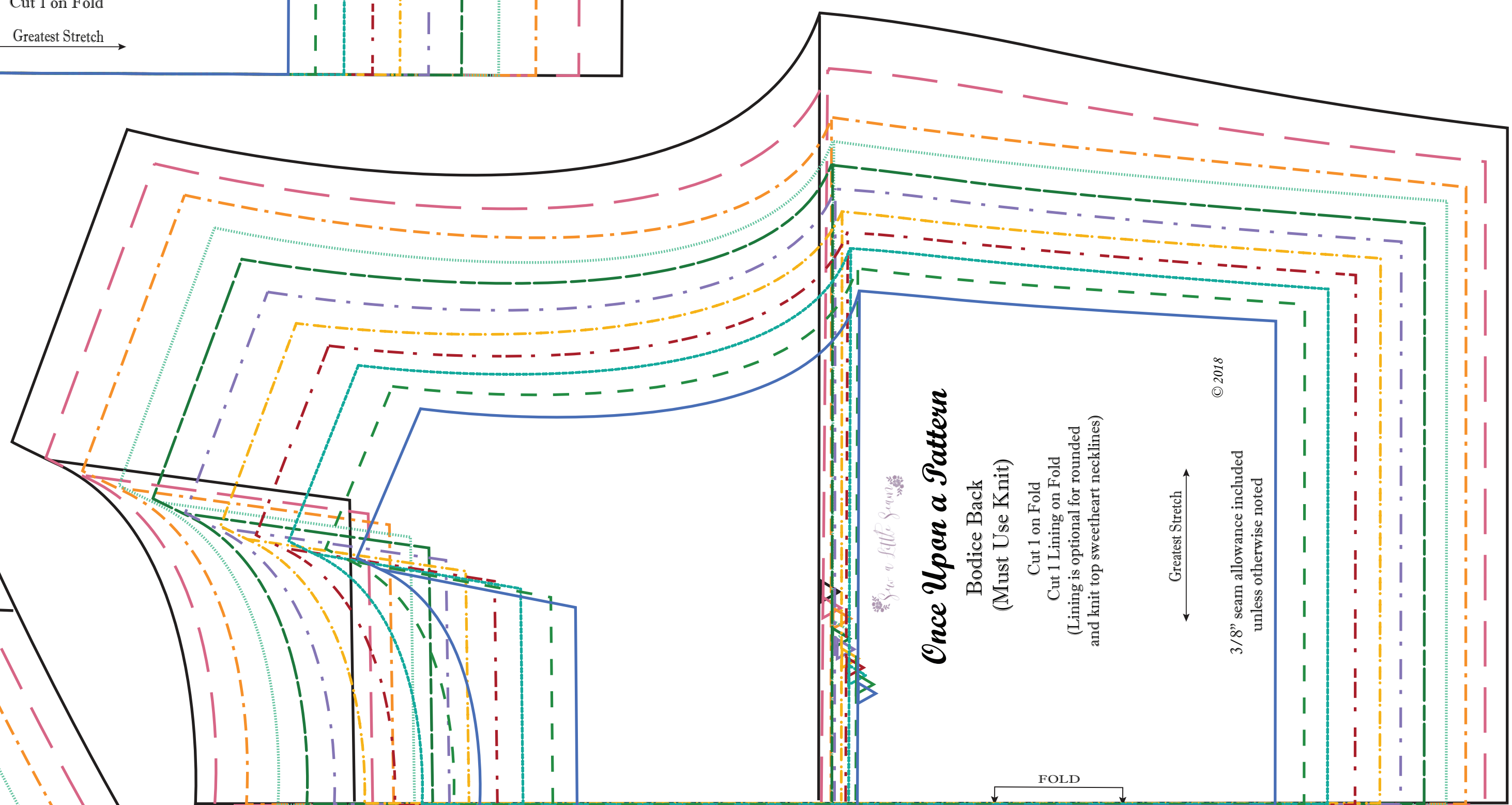
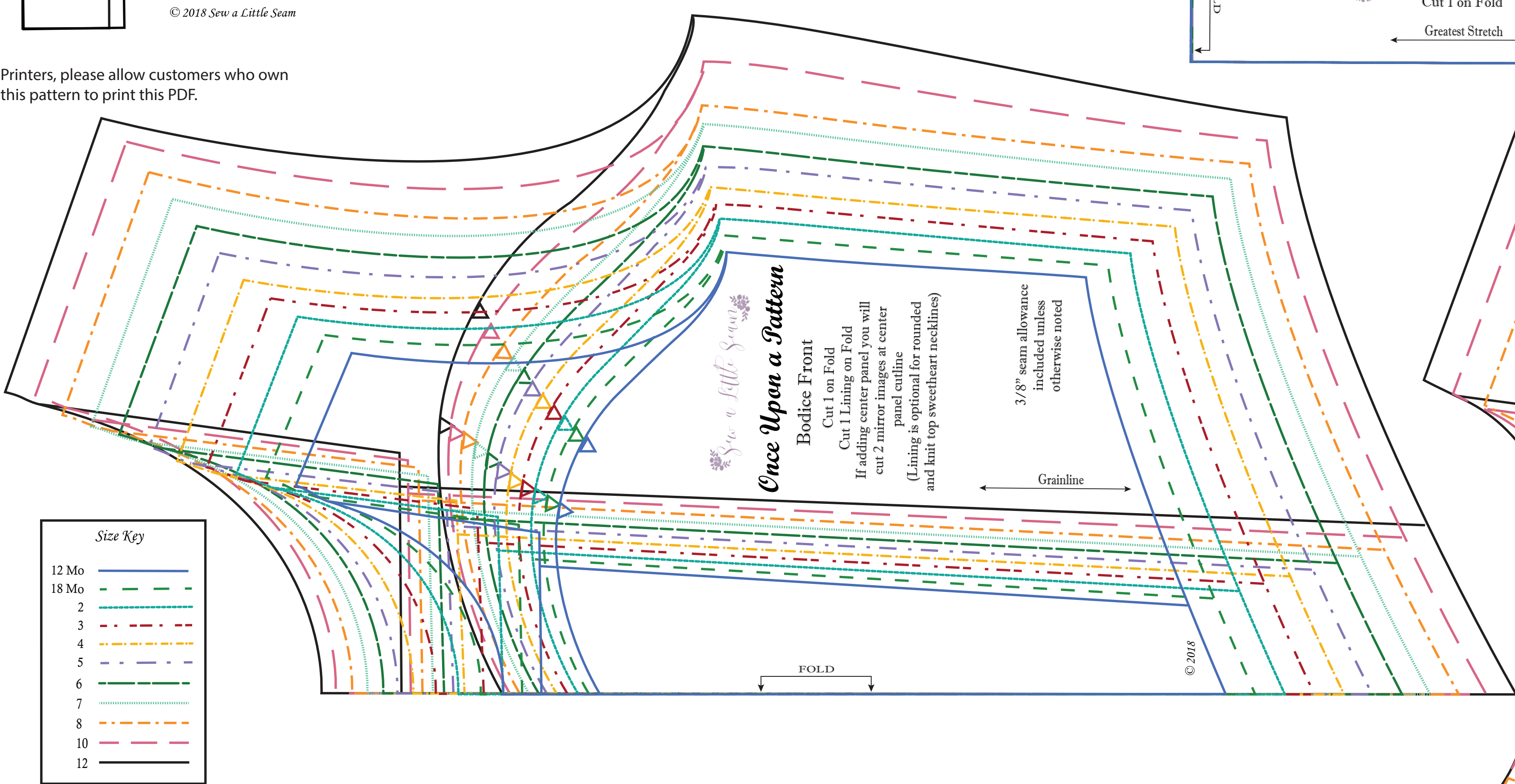
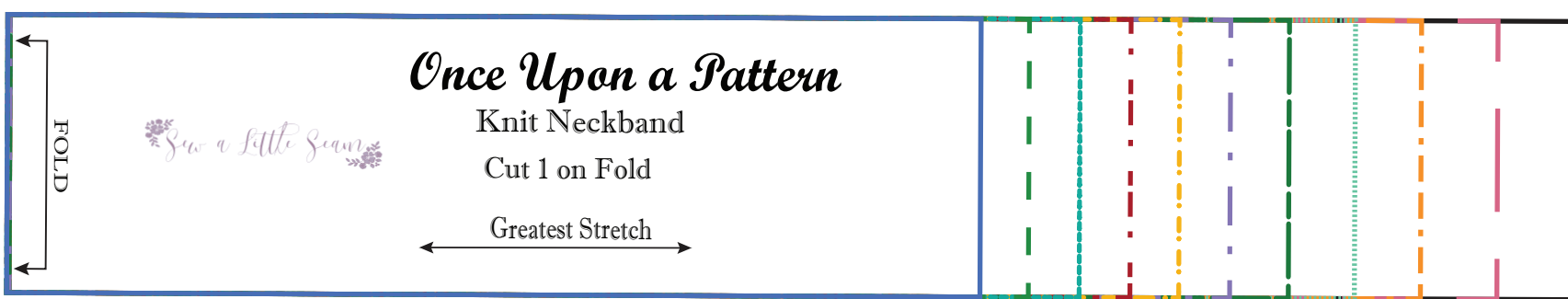
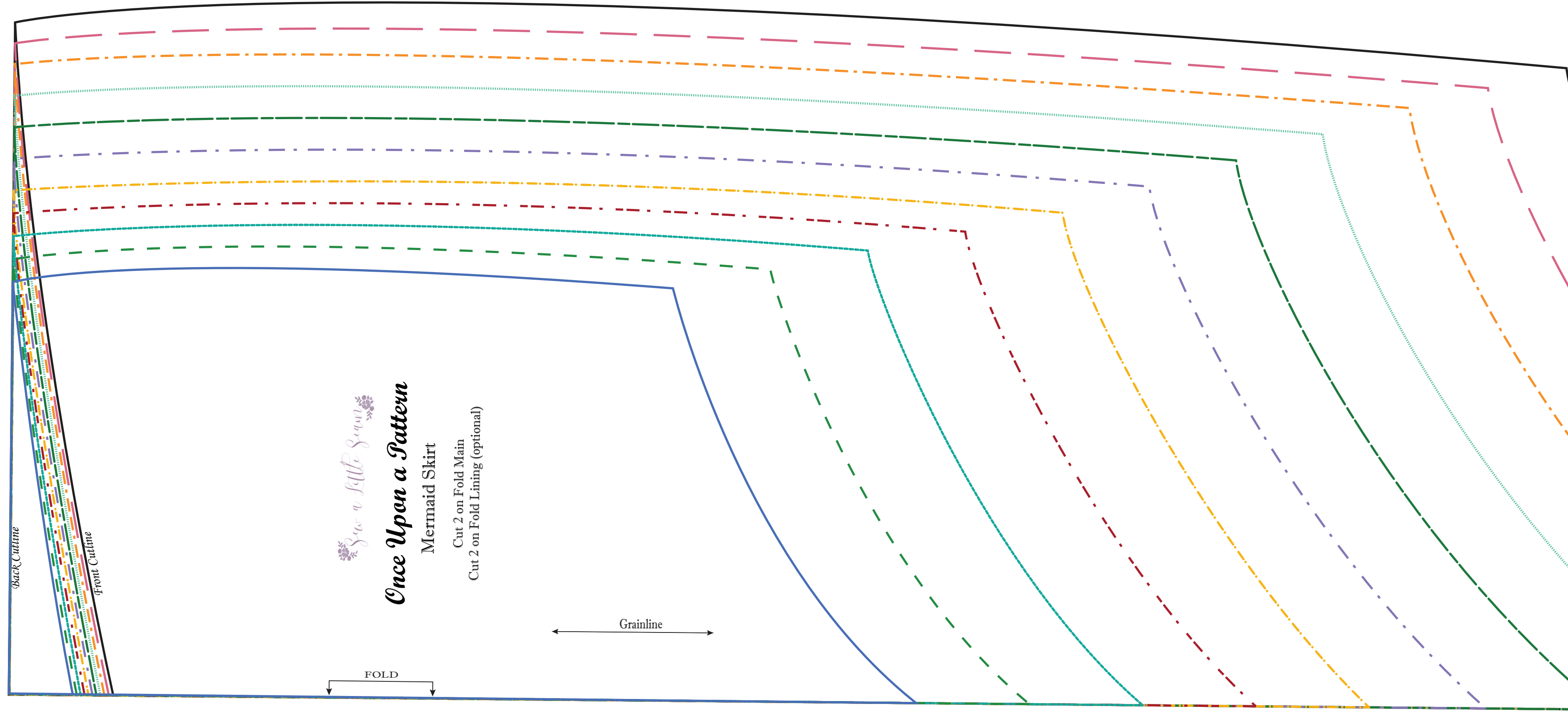
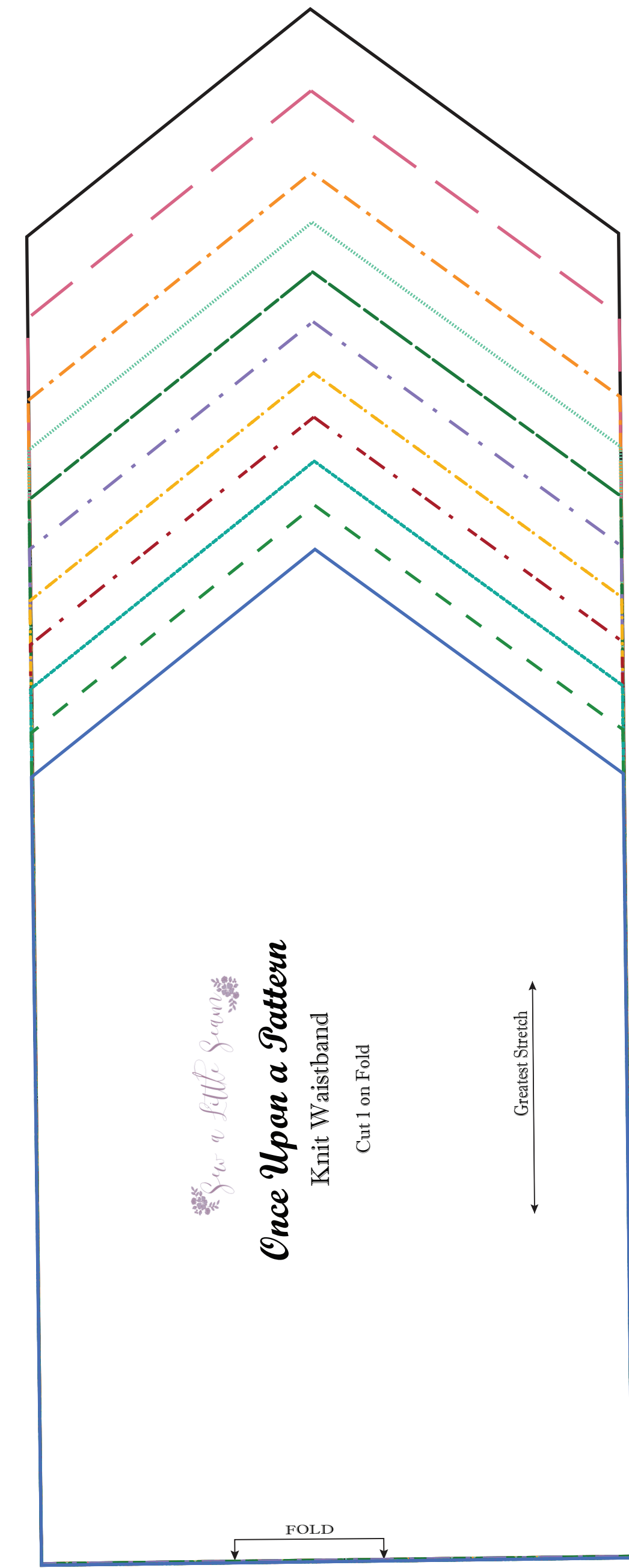
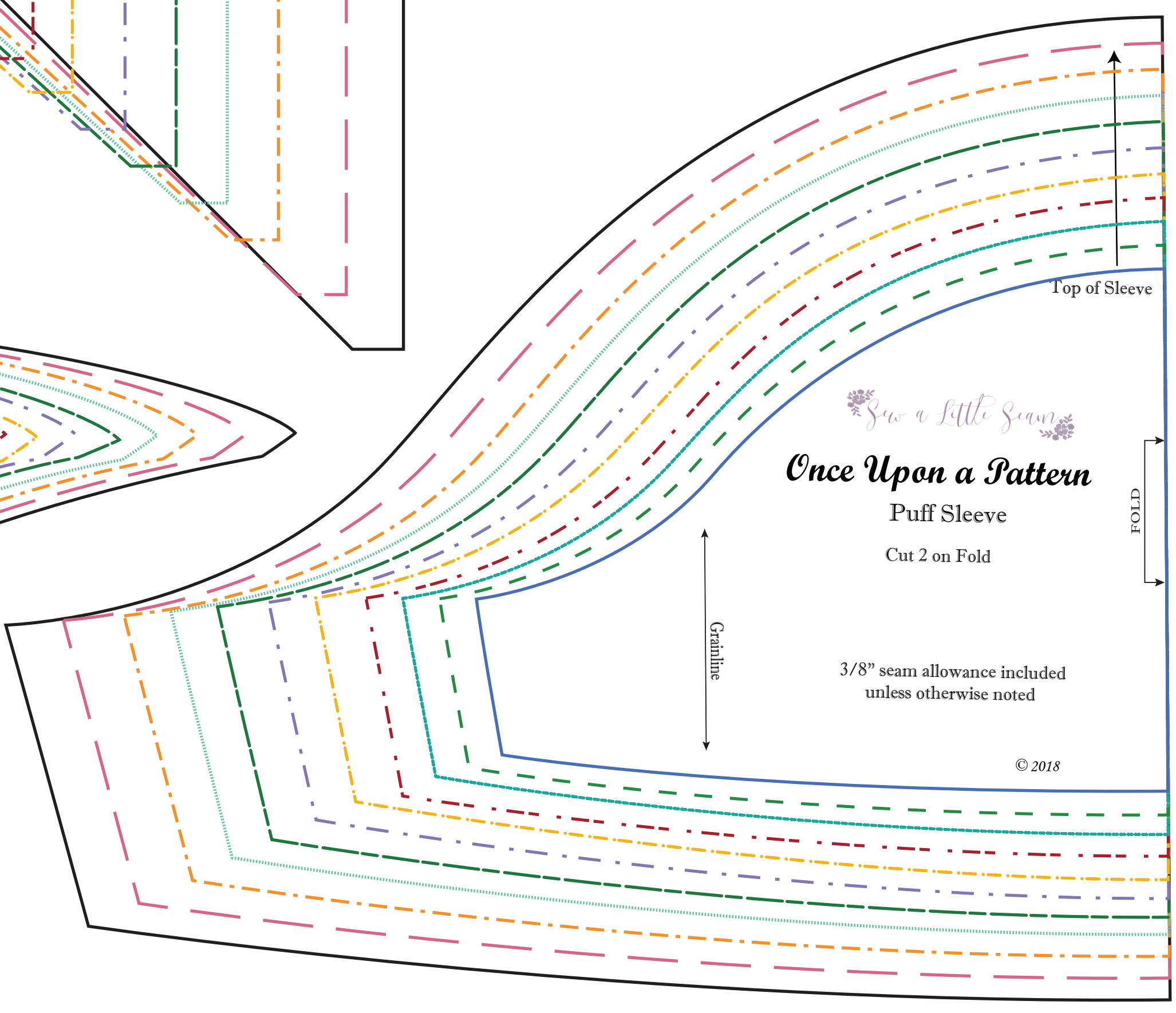
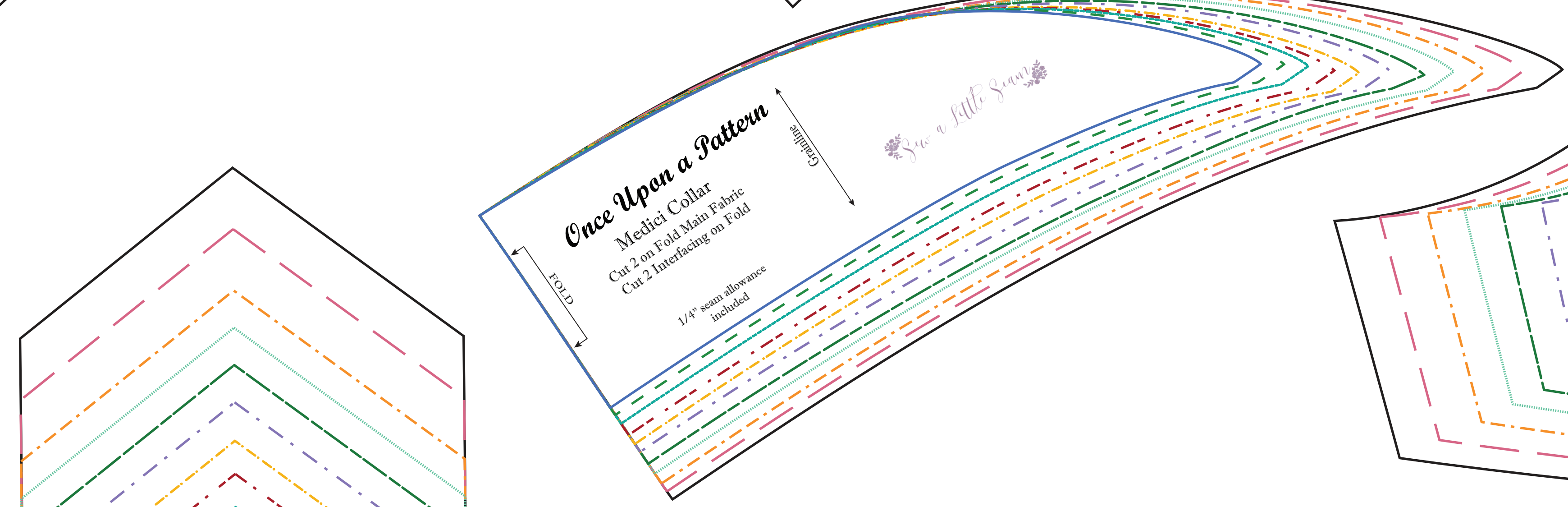
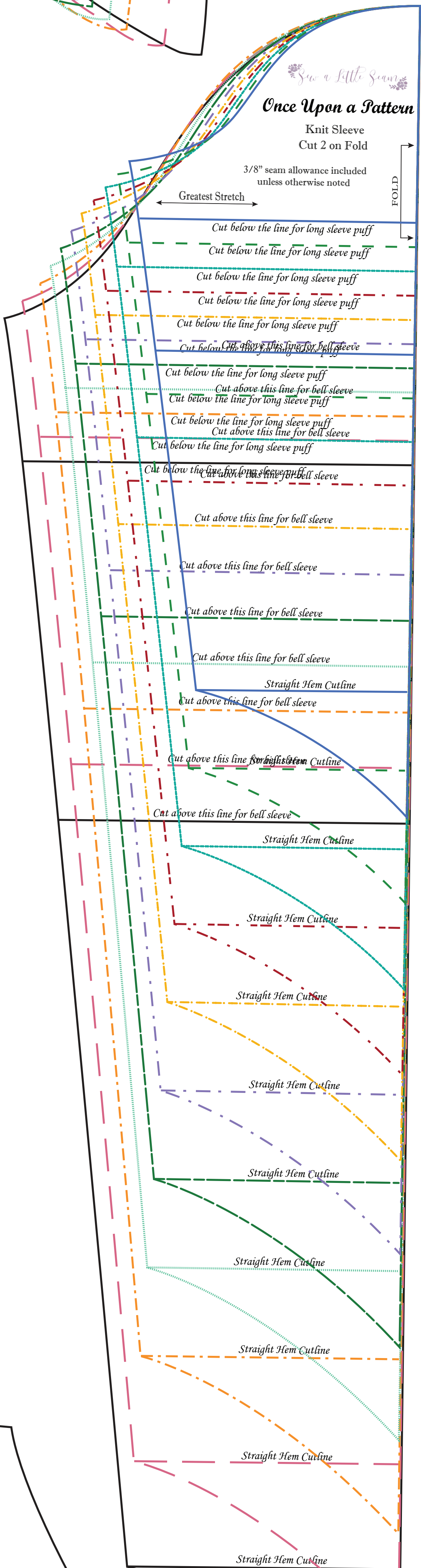
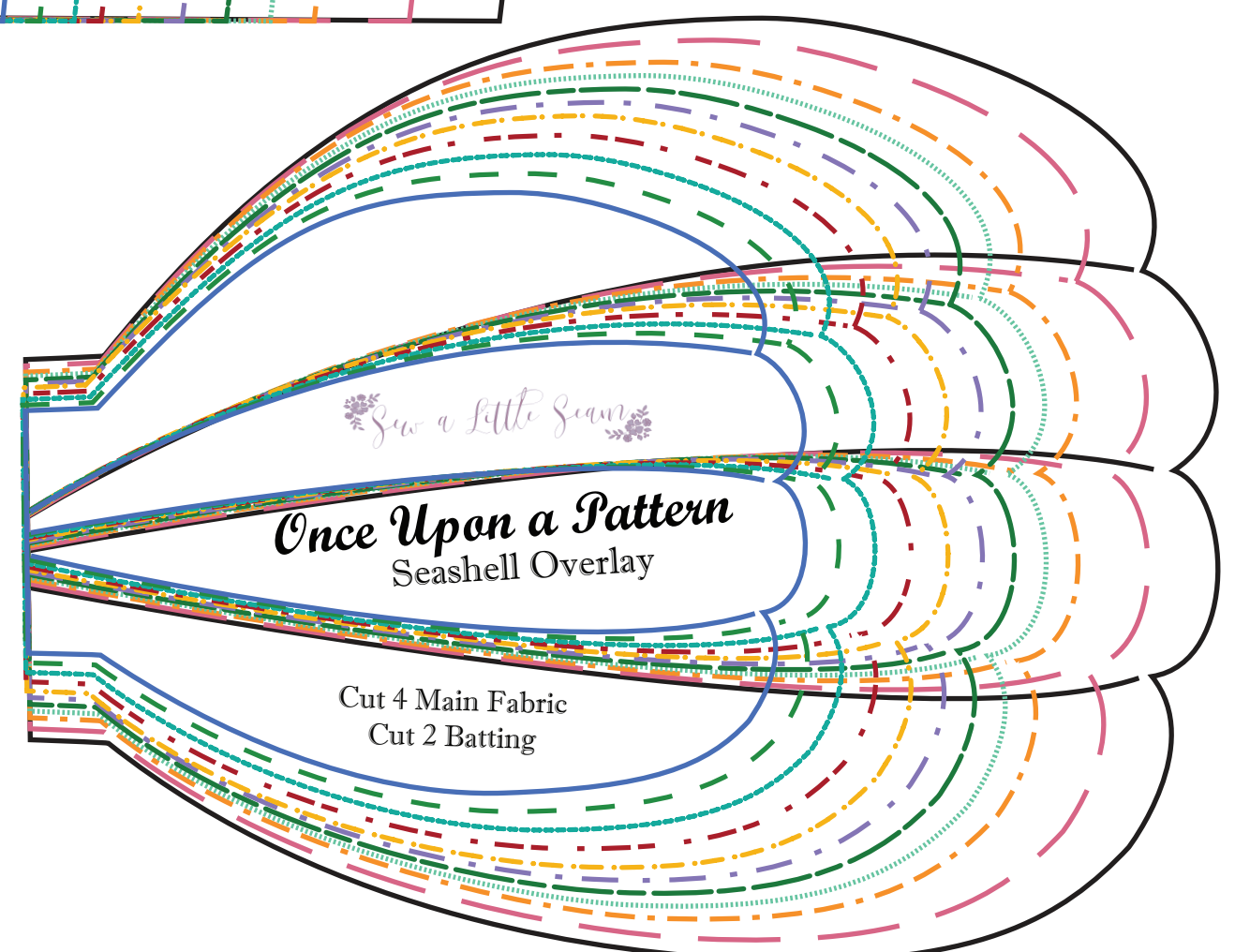
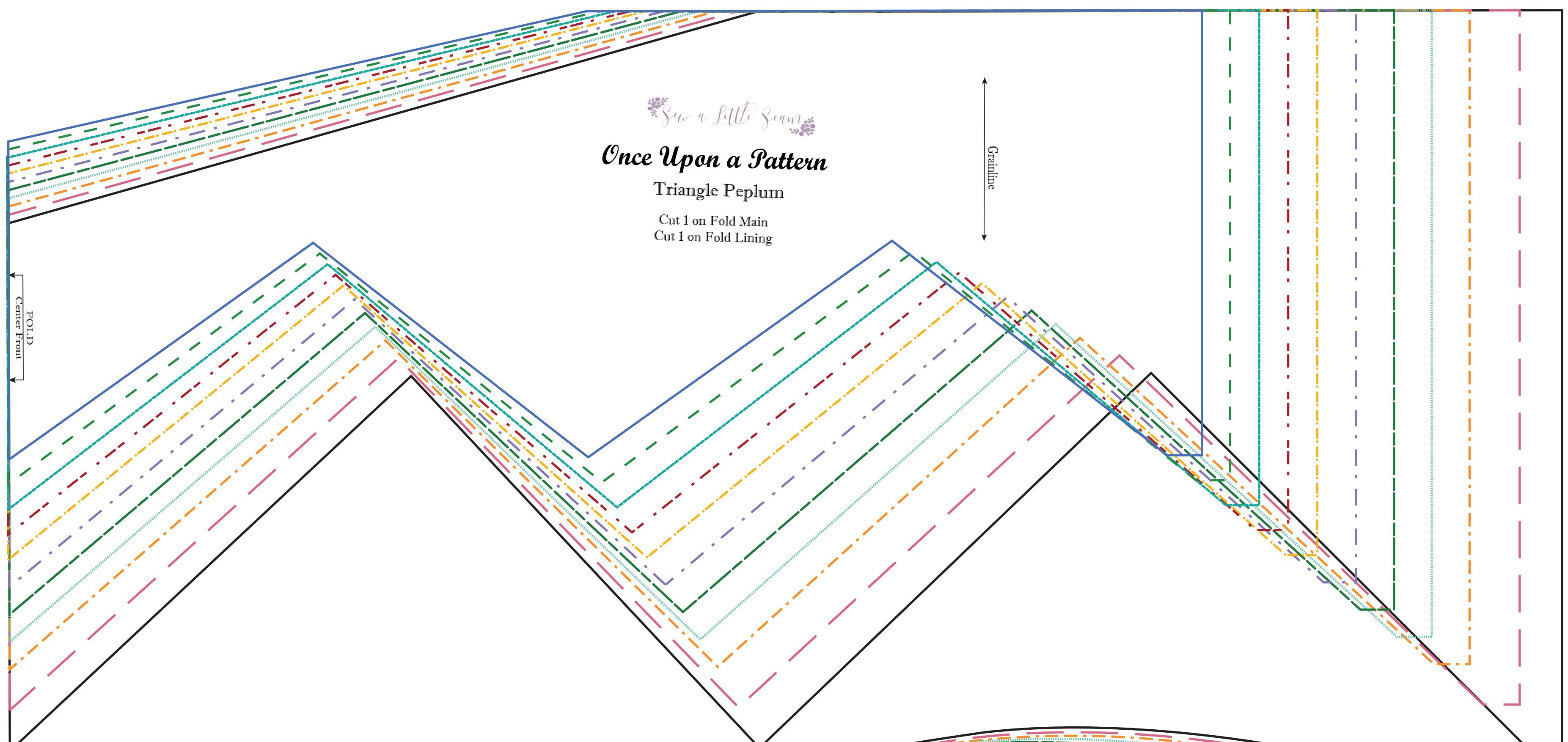
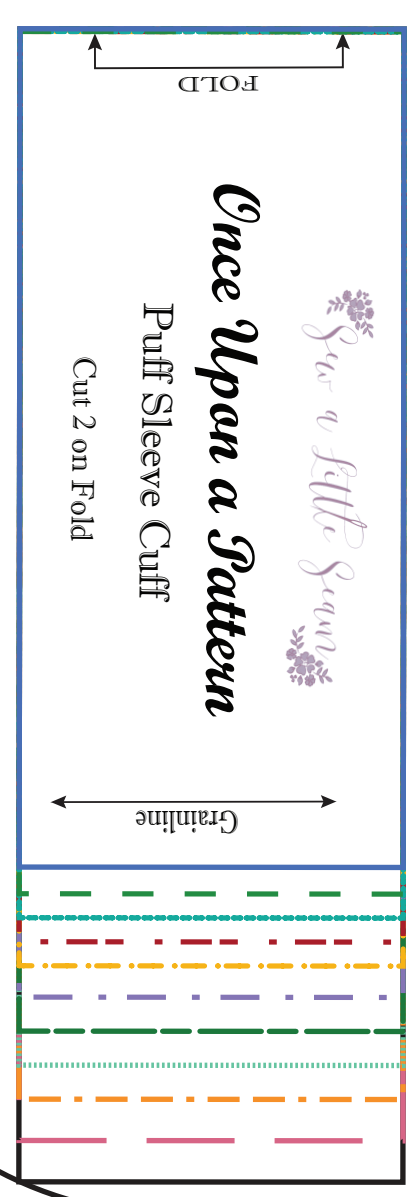
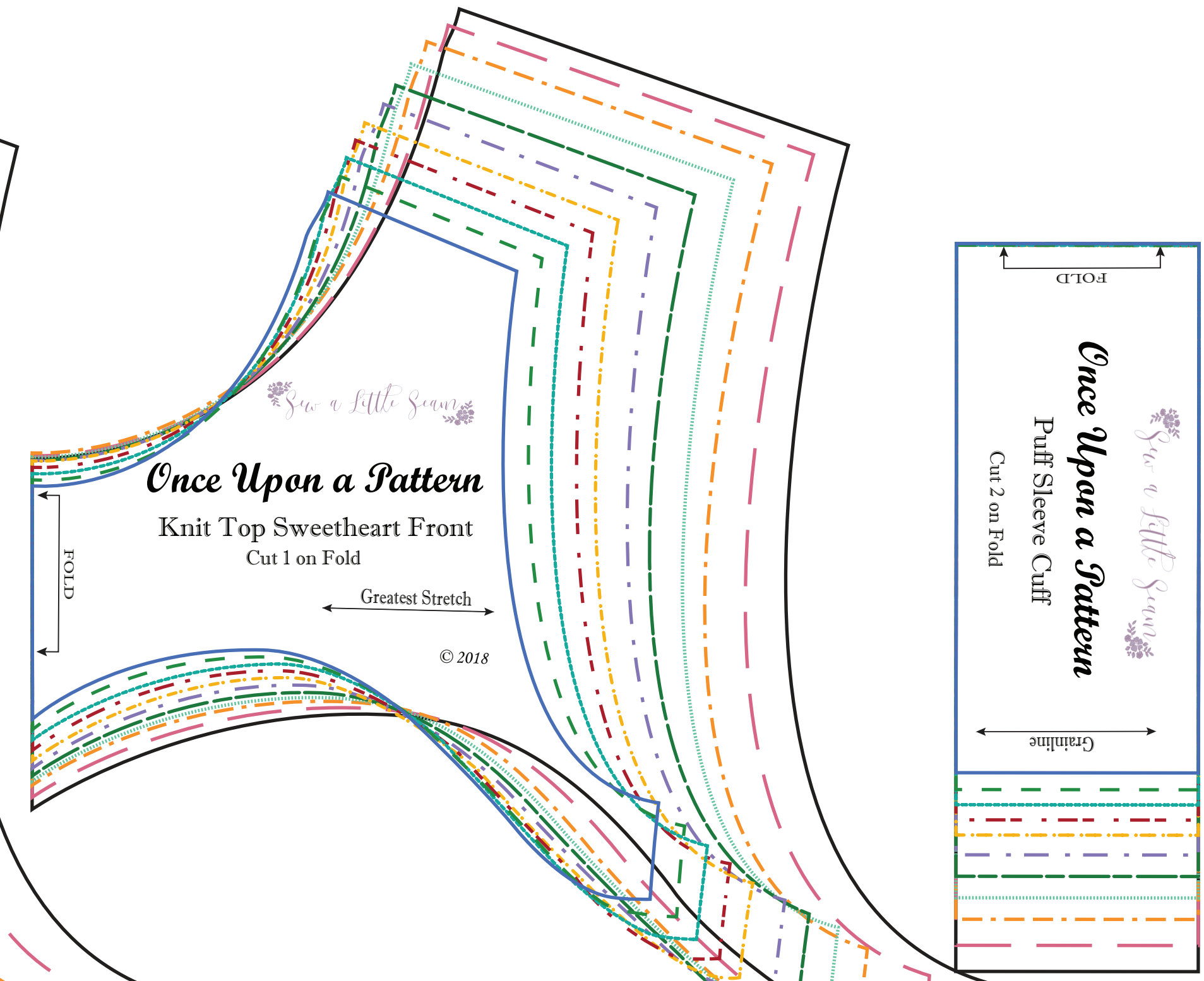
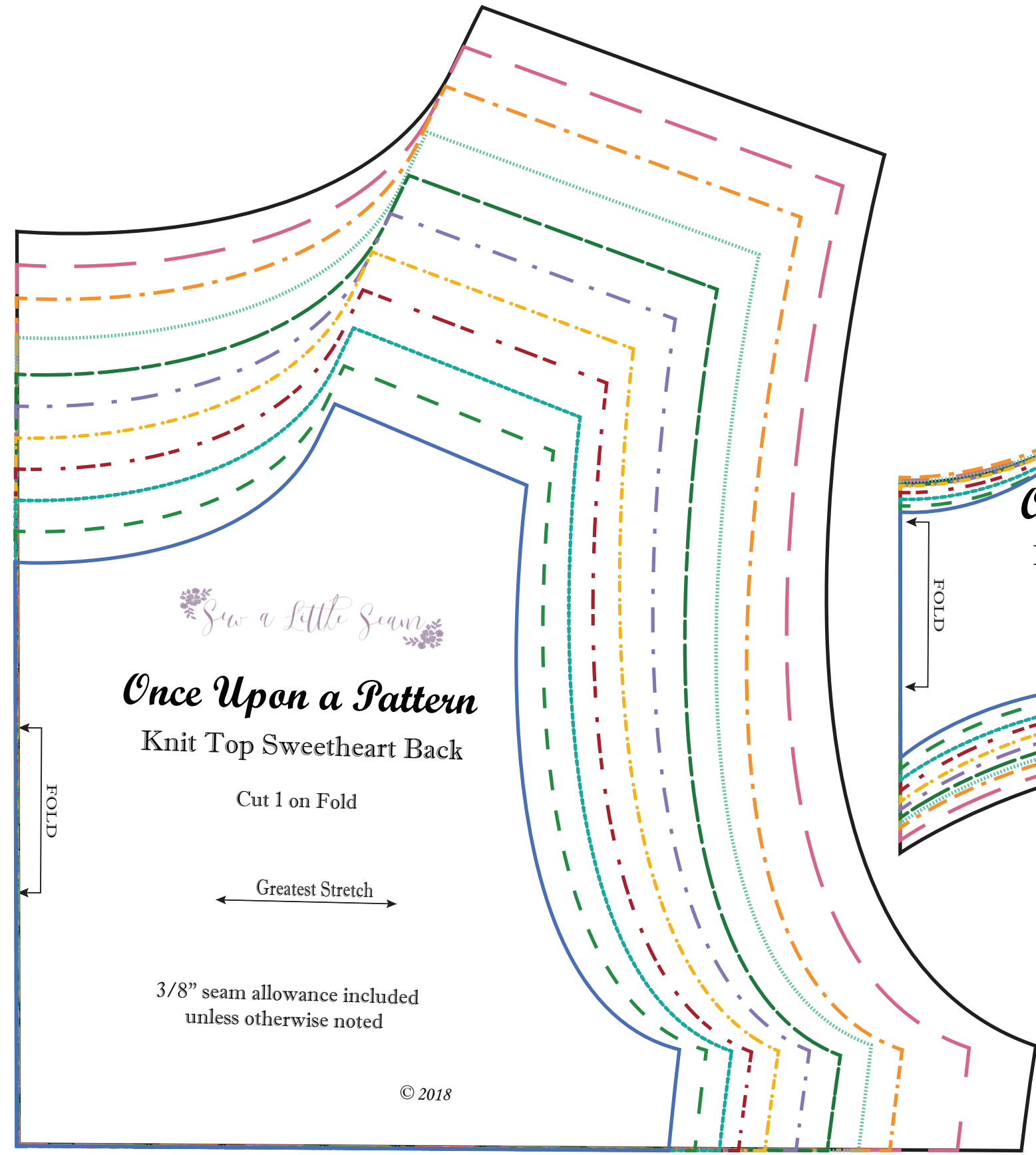
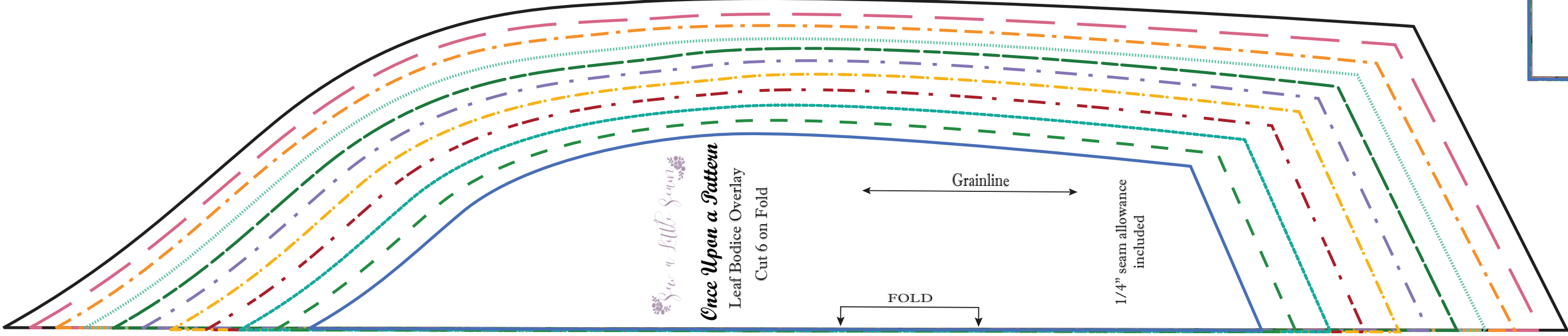
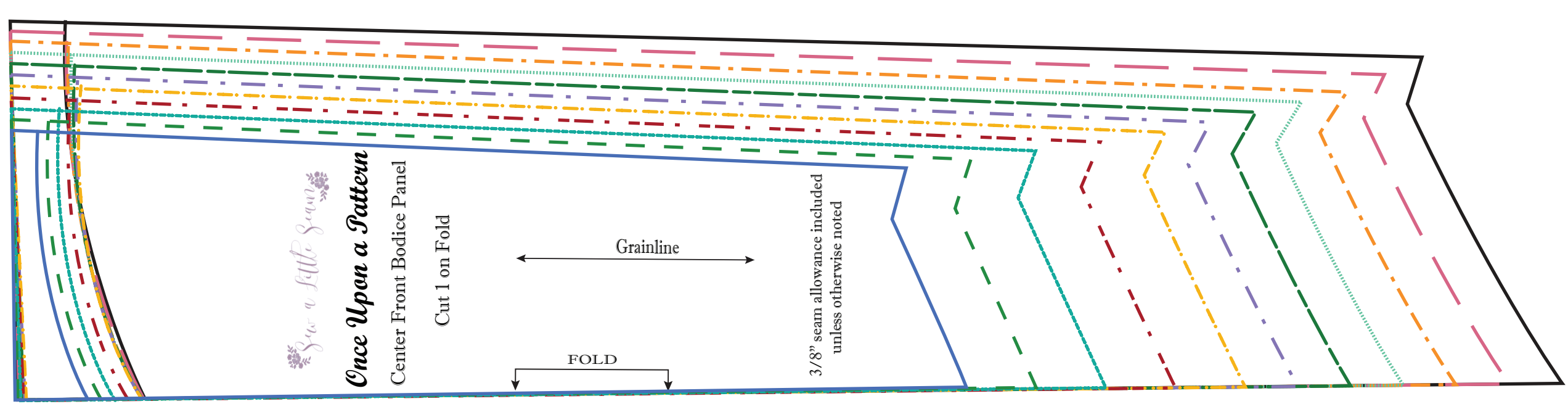
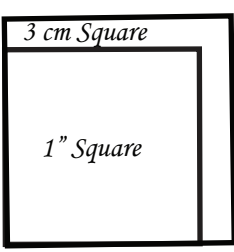


Printers, please allow customers who own this pattern to print this PDF.



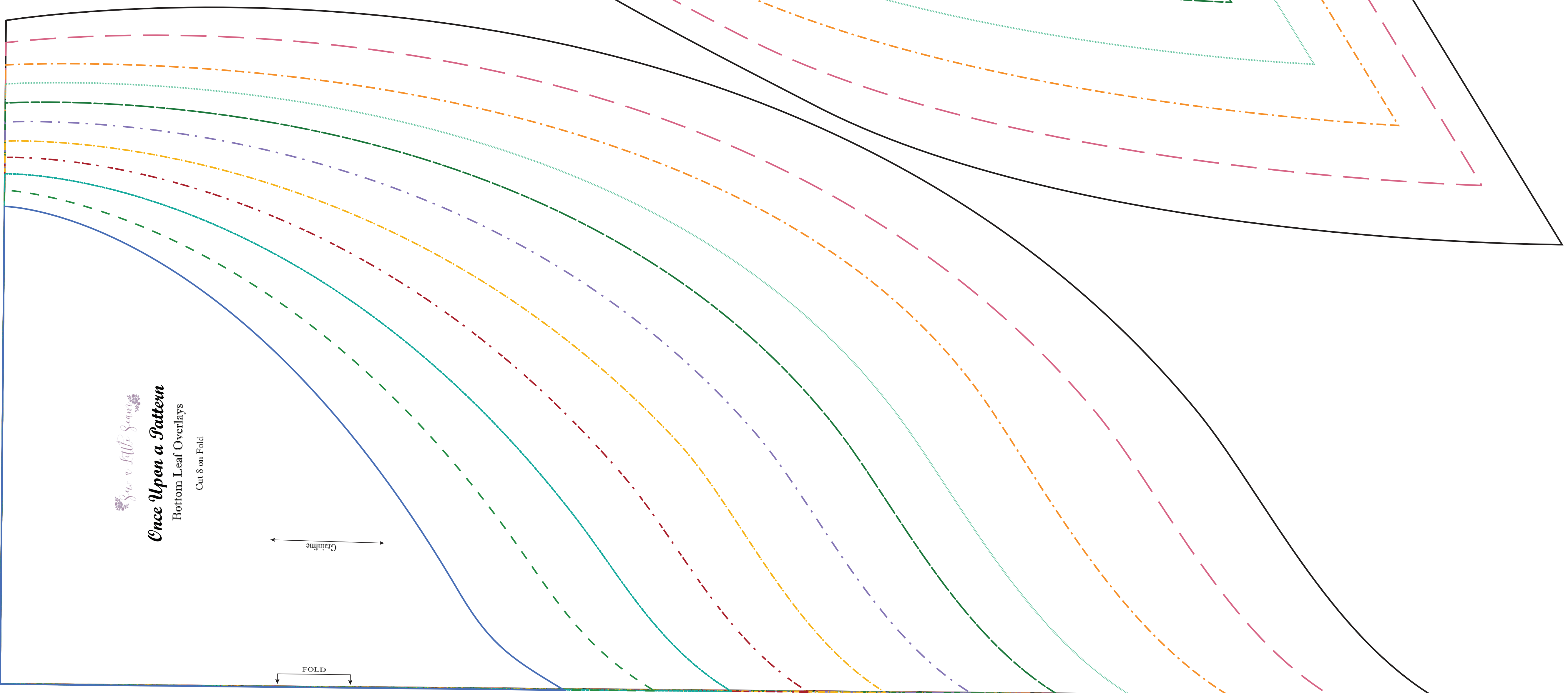
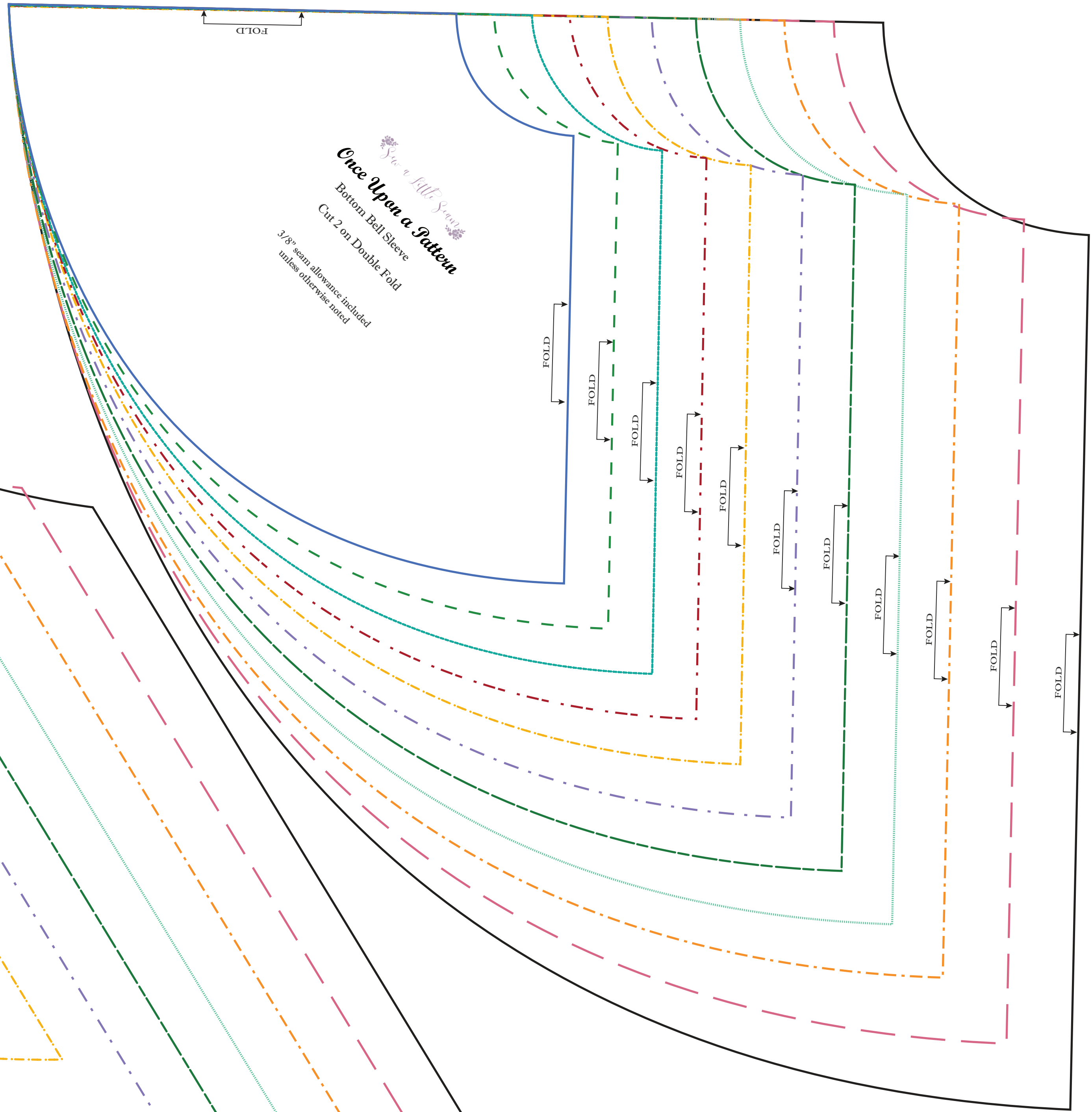
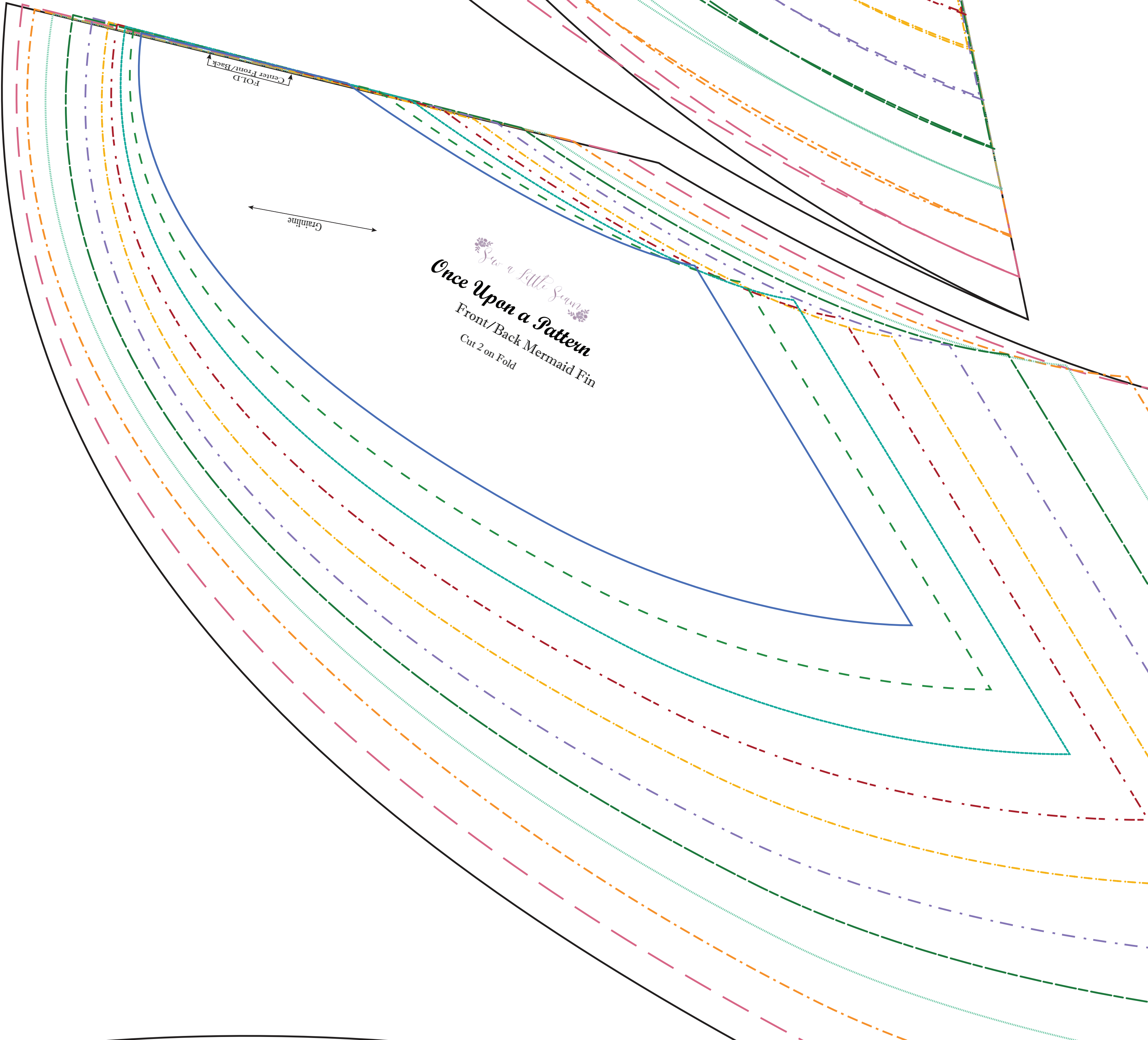
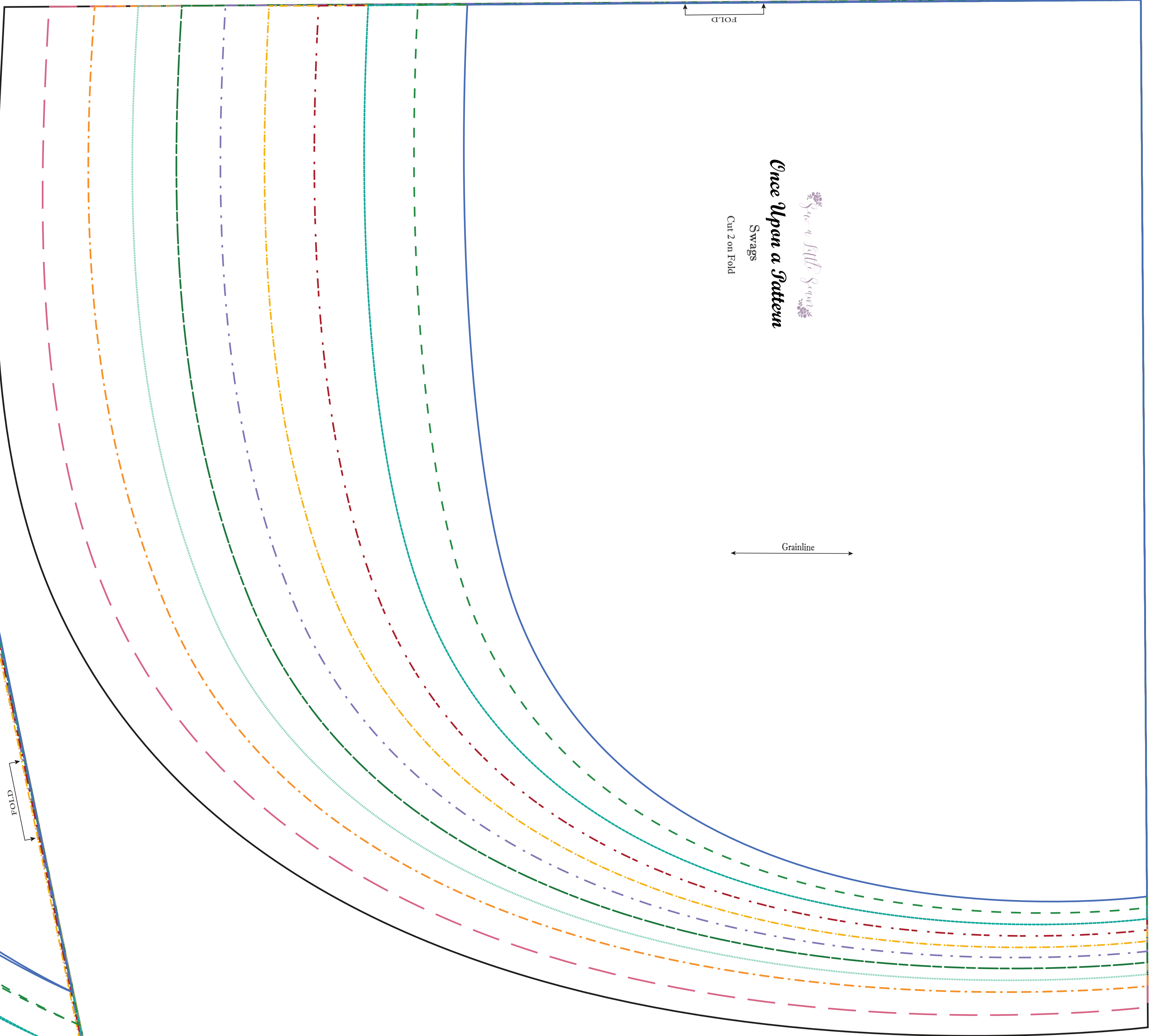
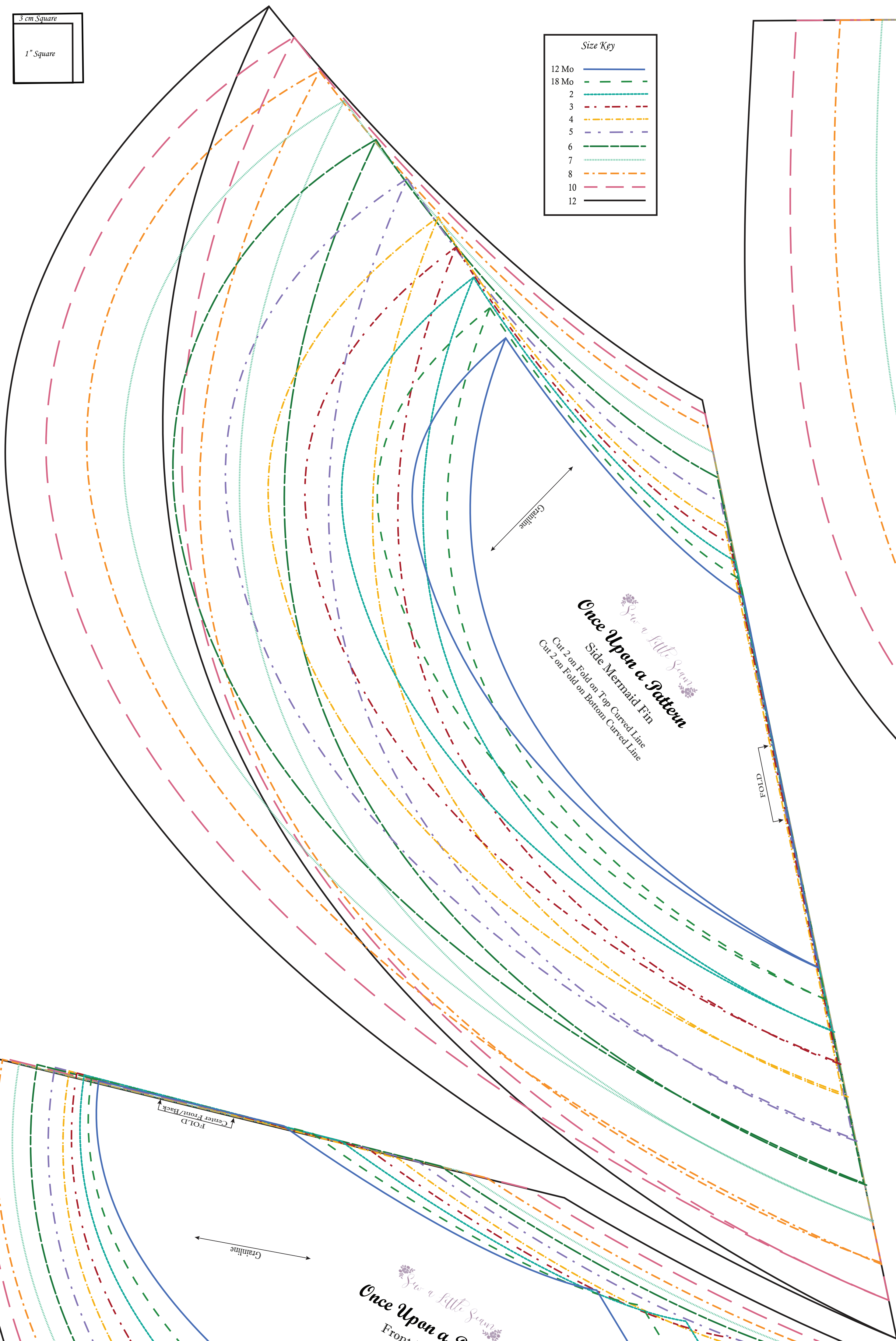
Size Key
12 Mo
18 Mo
2
3
4
5
6
7
10
12

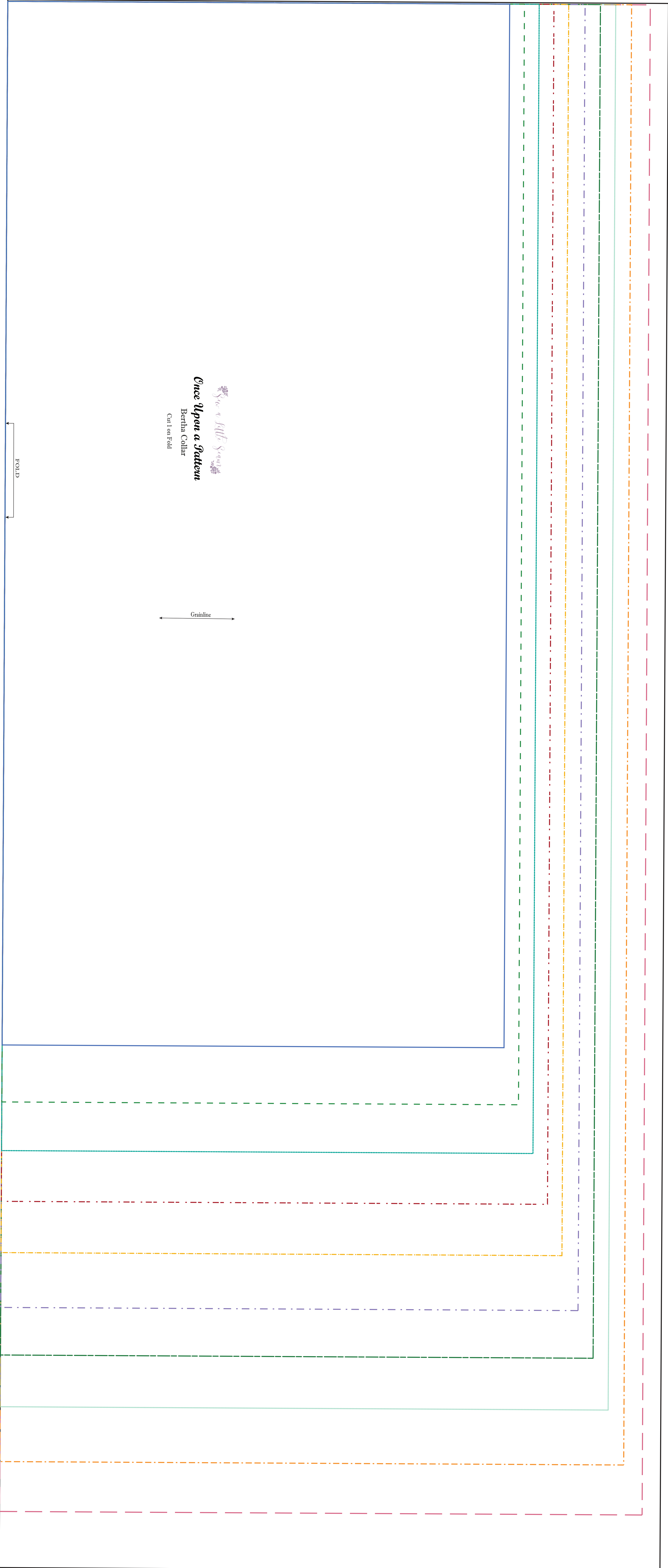




Size Key

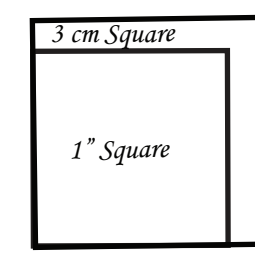
12 Mo	—
18 Mo	- - -
2	· · ·
3	— · —
4	- · - · -
5	· - · - · -
6	- · - · - · -
7	· - · - · - · -
8	- · - · - · - · -
10	· - · - · - · - · -
12	- · - · - · - · - · -

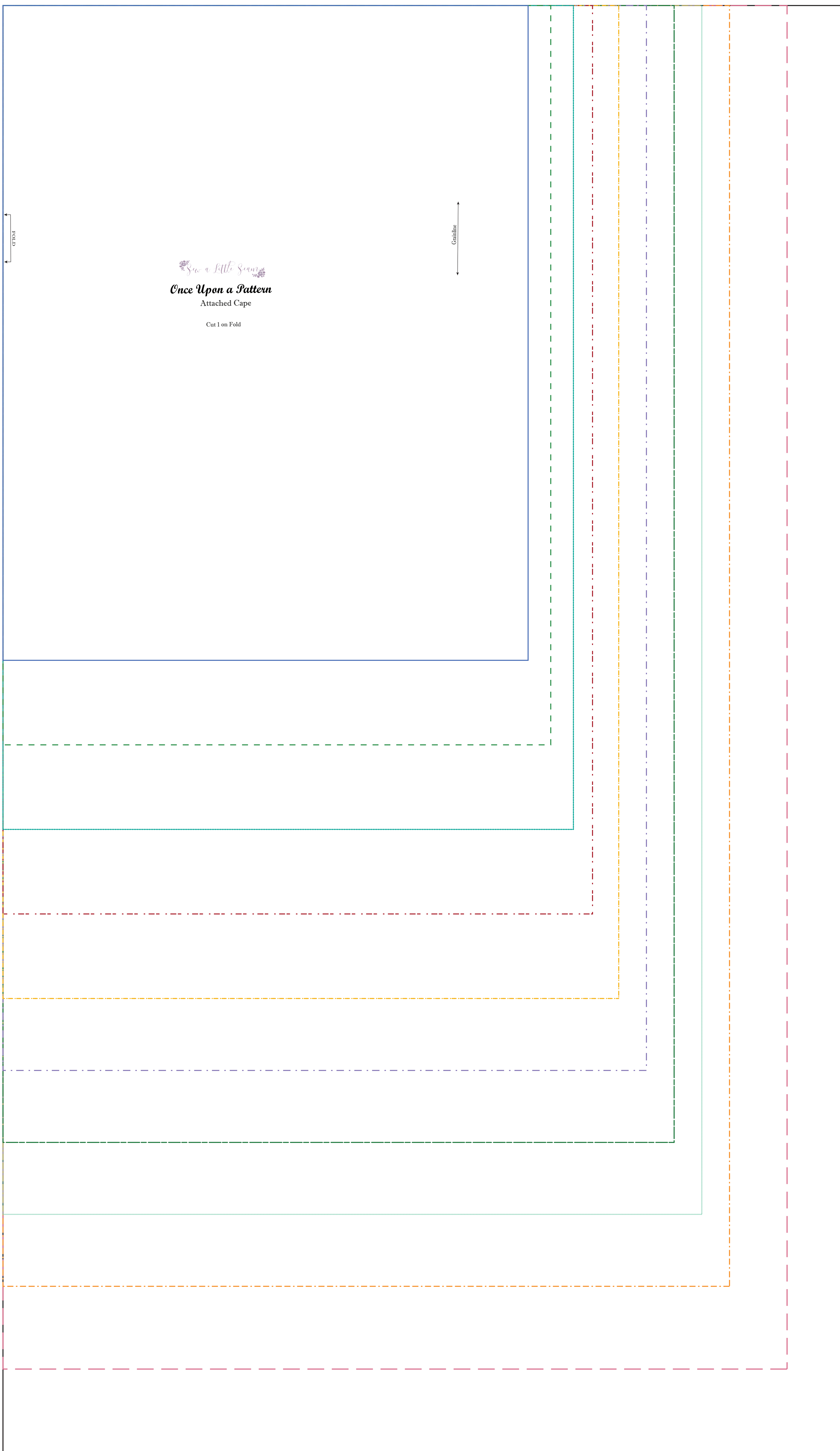




Size Key

12 Mo	
18 Mo	
2	
3	
4	
5	
6	
7	
8	
10	
12	

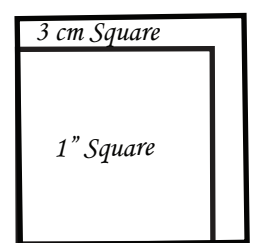


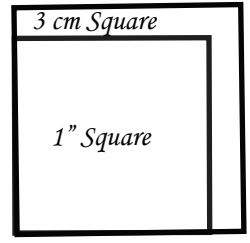



Once Upon a Pattern
 Attached Cape
 Cut 1 on Fold

Size Key

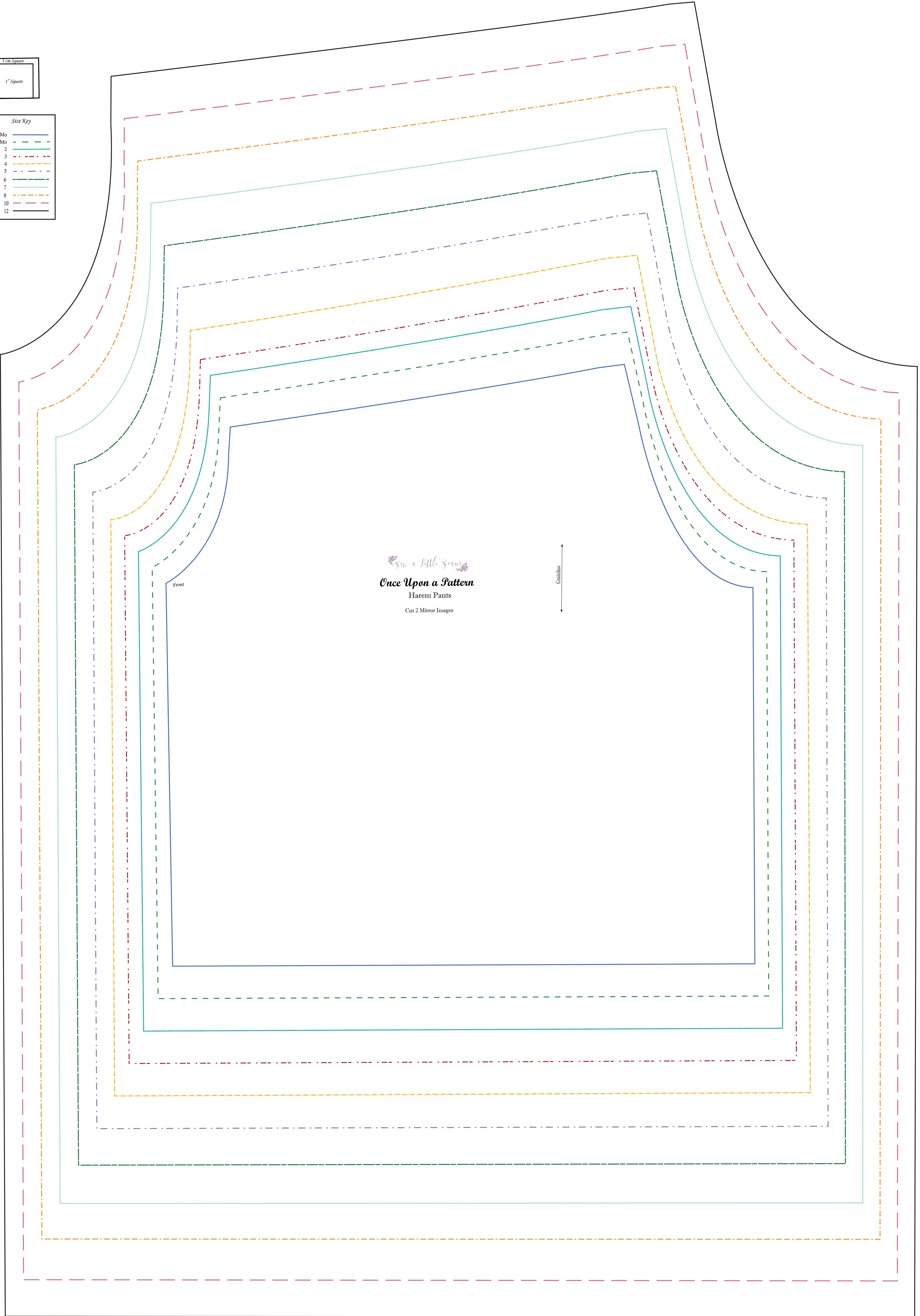
12 Mo	— (Blue)
18 Mo	- - - (Green)
2	- · - · (Purple)
3	- · - · (Orange)
4	- · - · (Yellow)
5	- · - · (Light Blue)
6	- · - · (Light Green)
7	- · - · (Light Purple)
8	- · - · (Light Orange)
10	- · - · (Light Yellow)
12	- · - · (Light Blue)





Size Key

12 Mo	—
18 Mo	- - -
2	—
3	- - -
4	—
5	- - -
6	—
7	- - -
8	—
10	- - -
12	—

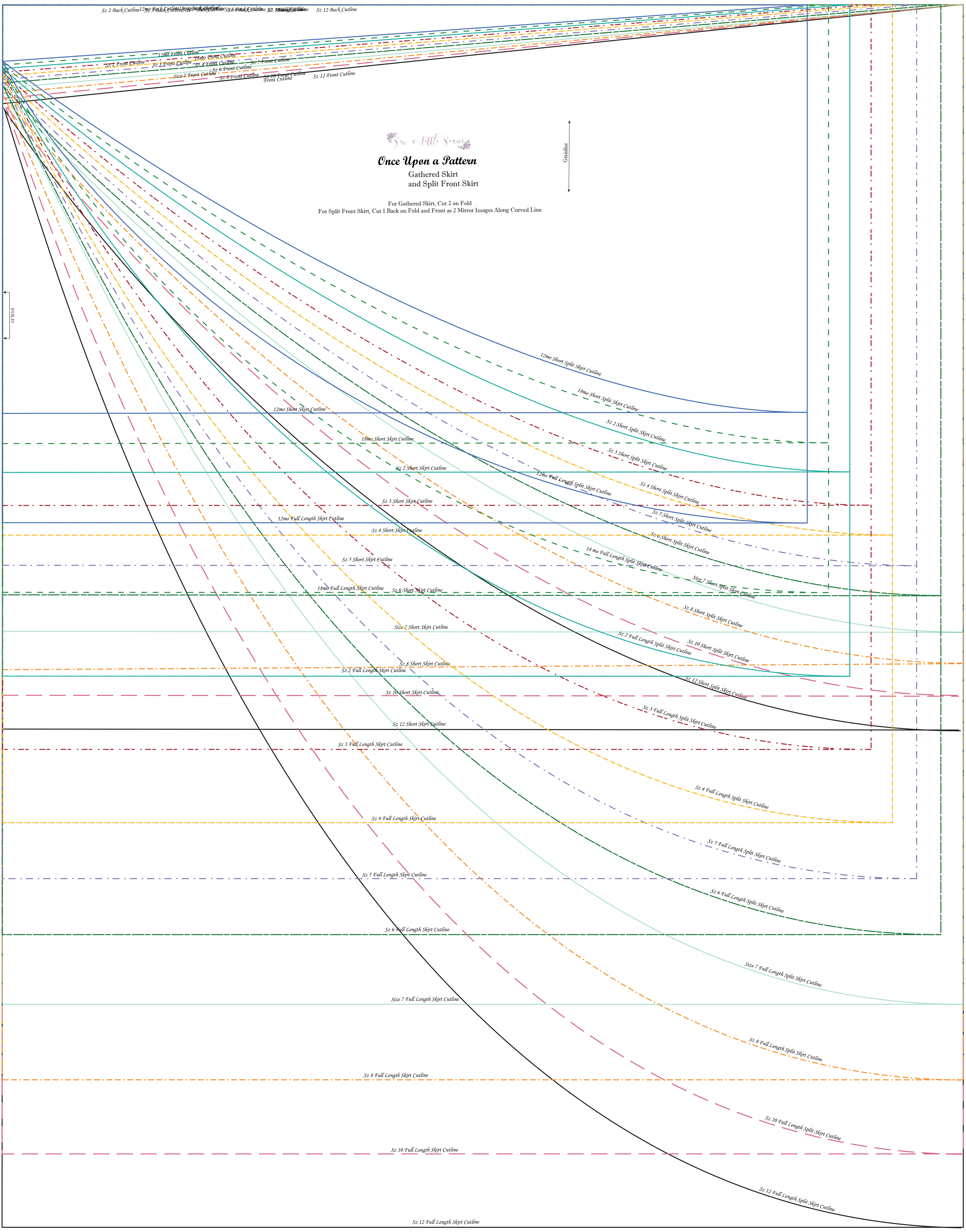
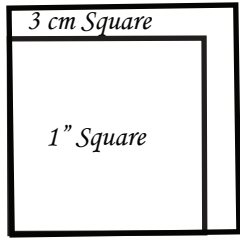


See a Little Sewing
Once Upon a Pattern
Harem Pants
Cut 2 Mirror Images

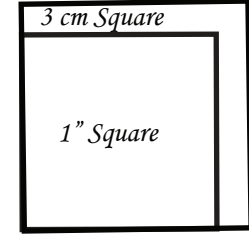
Front

Grainline

Size Key	
12 Mo	— (Blue)
18 Mo	— (Green)
2	— (Red)
3	— (Orange)
4	— (Yellow)
5	— (Light Blue)
6	— (Light Green)
7	— (Light Purple)
8	— (Light Orange)
10	— (Light Red)
12	— (Black)



Size Key	
12 Mo	— (Blue)
18 Mo	— (Green)
2	— (Red)
3	— (Orange)
4	— (Yellow)
5	— (Light Green)
6	— (Teal)
7	— (Dark Green)
8	— (Light Blue)
10	— (Purple)
12	— (Black)



See a Little Seam
Once Upon a Pattern
 A Line Skirt
 and Split Front Skirt

For A Line Skirt, Cut 2 on Fold
 For Split Front Skirt, Cut 1 Back on Fold and Cut Front as 2 Mirror Images Along Curved Line

