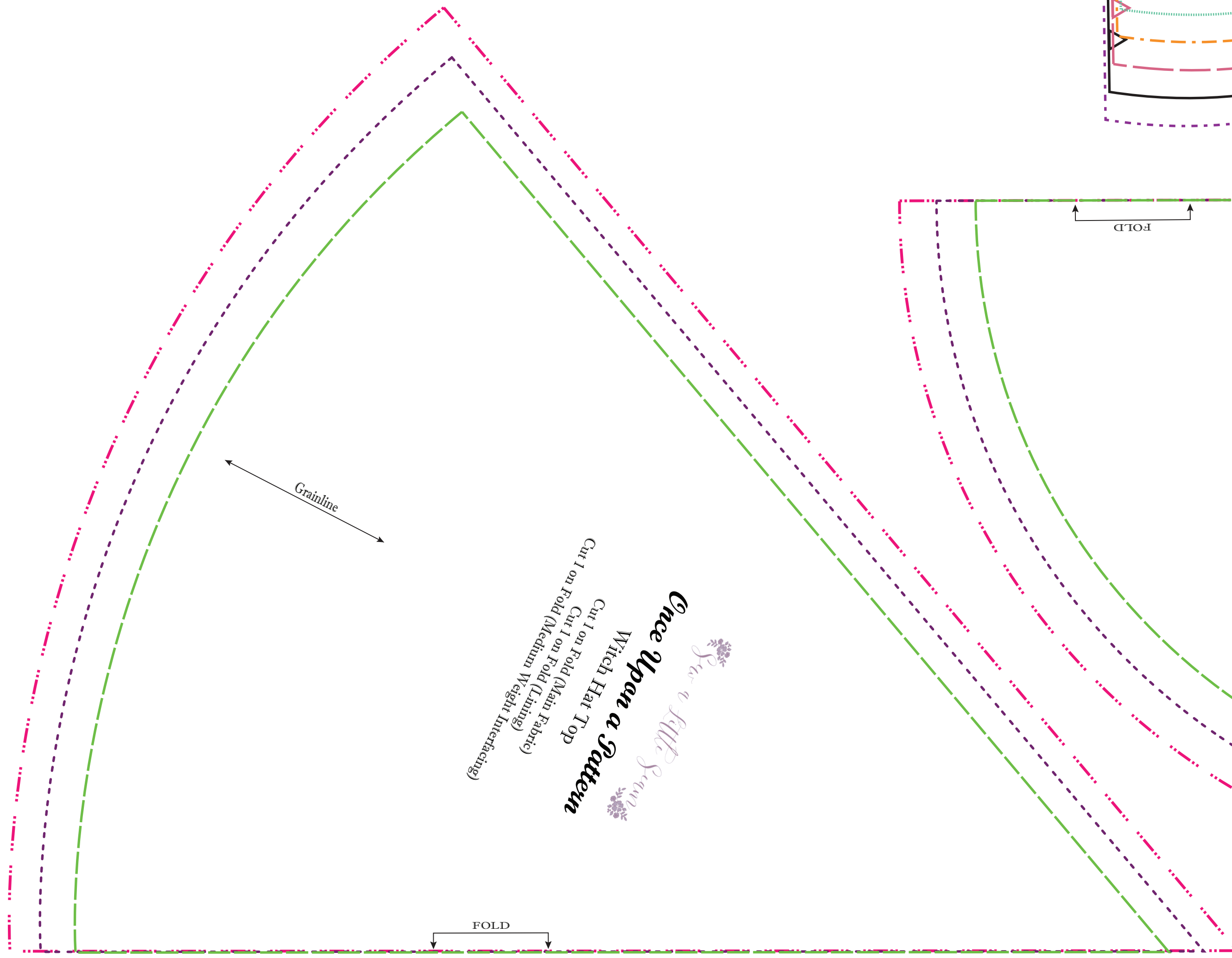
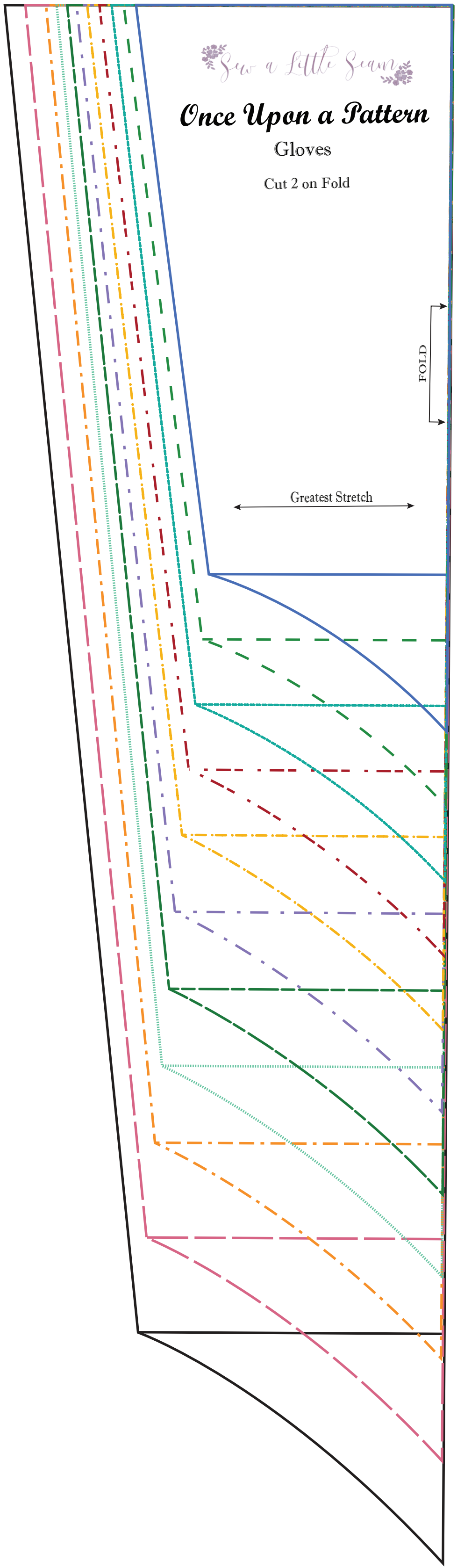
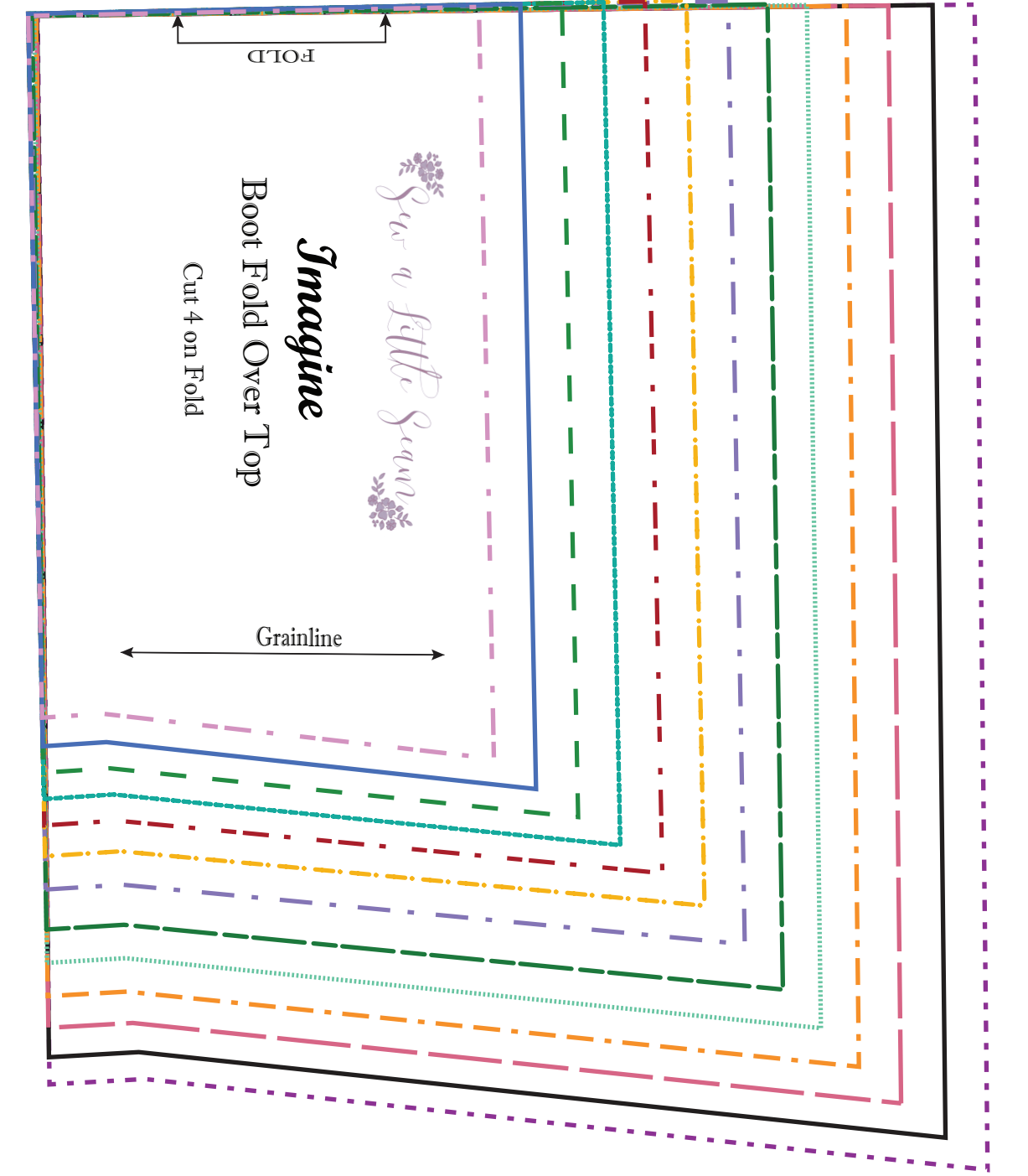
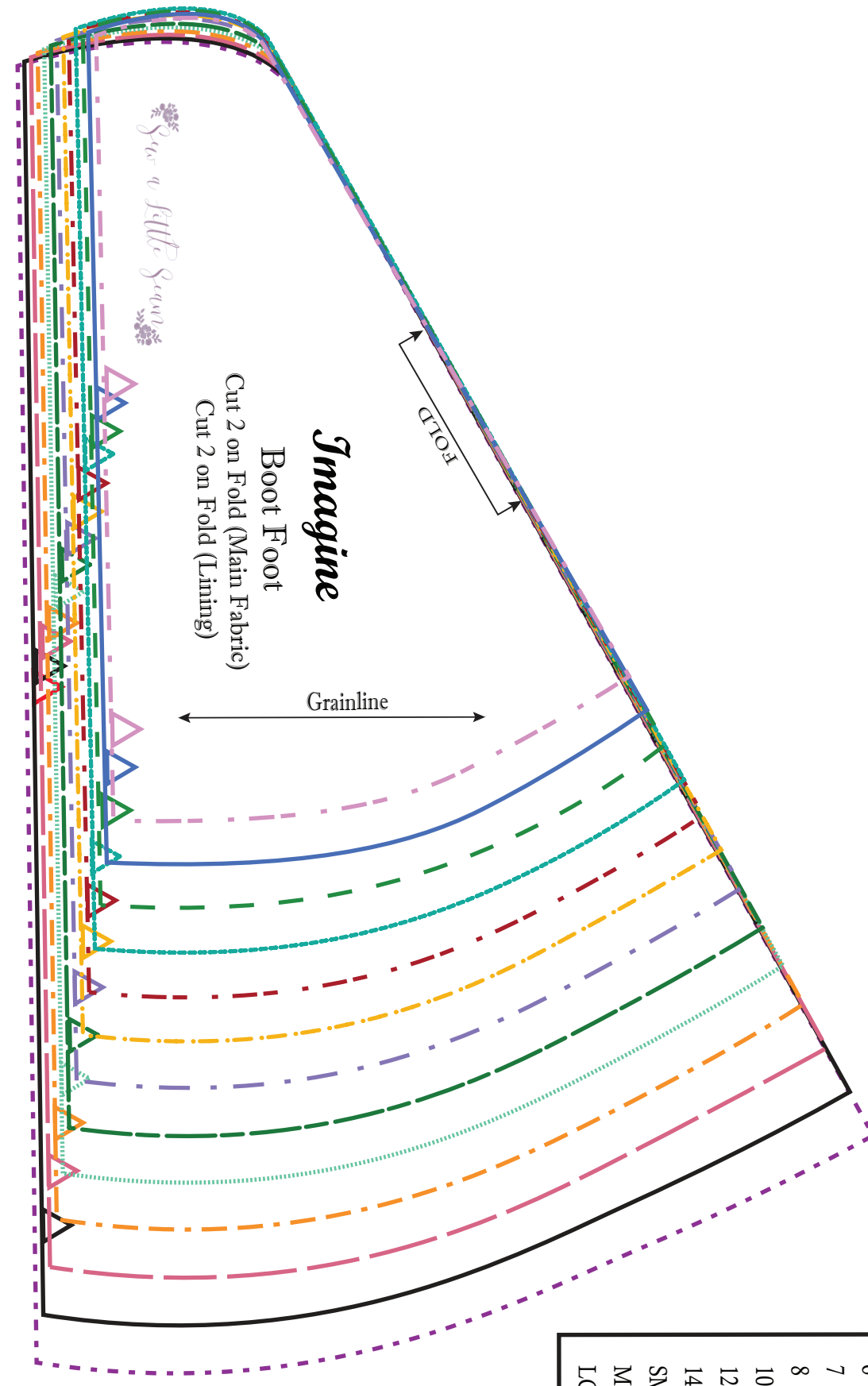
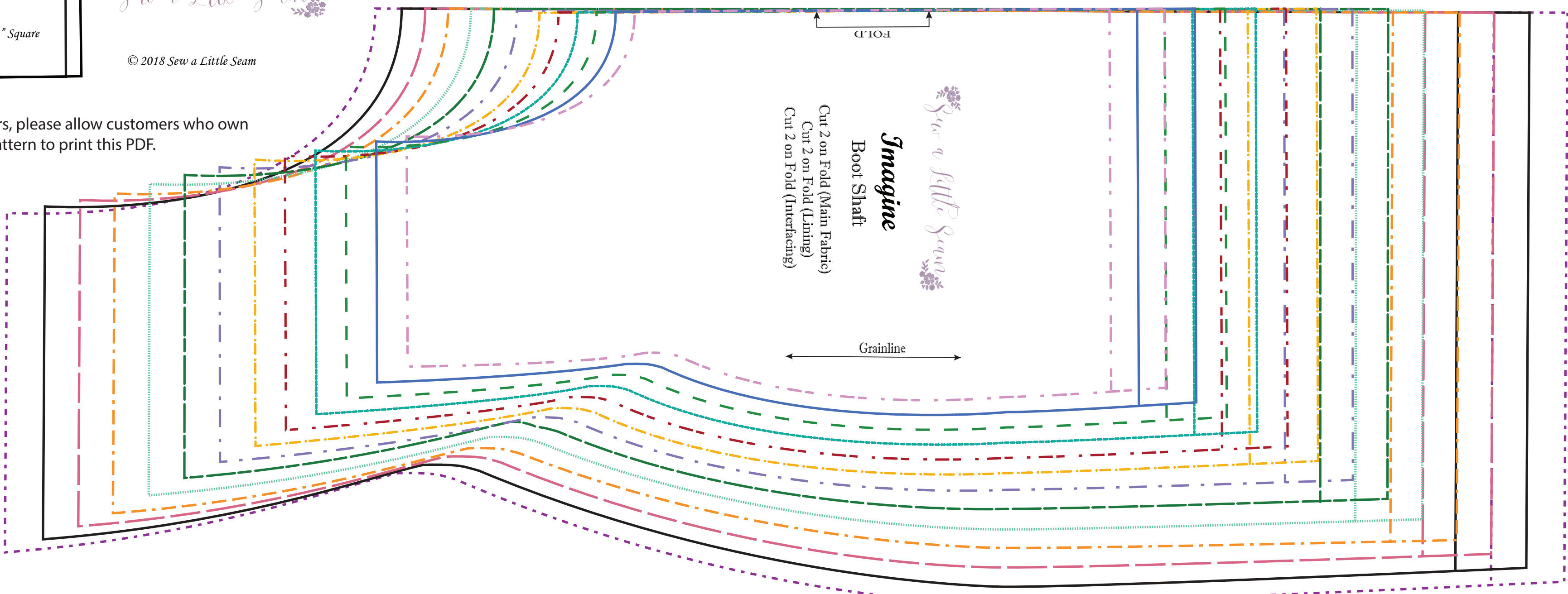
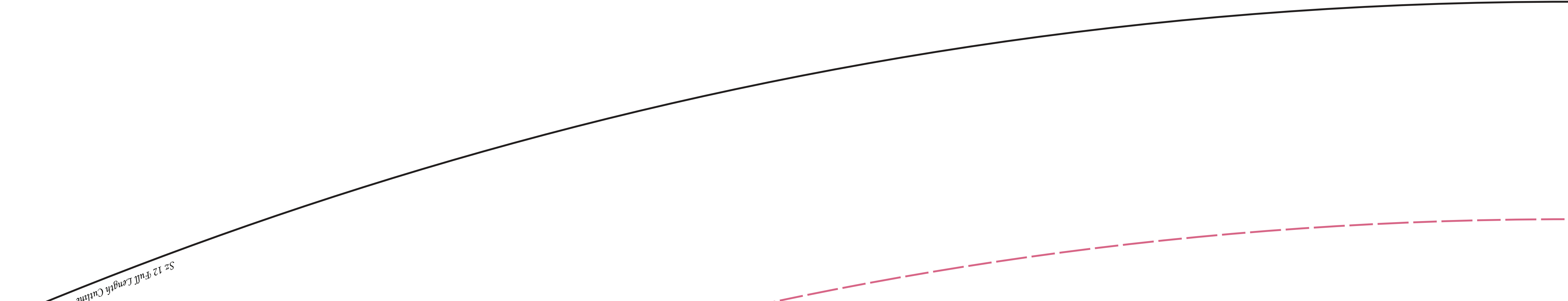
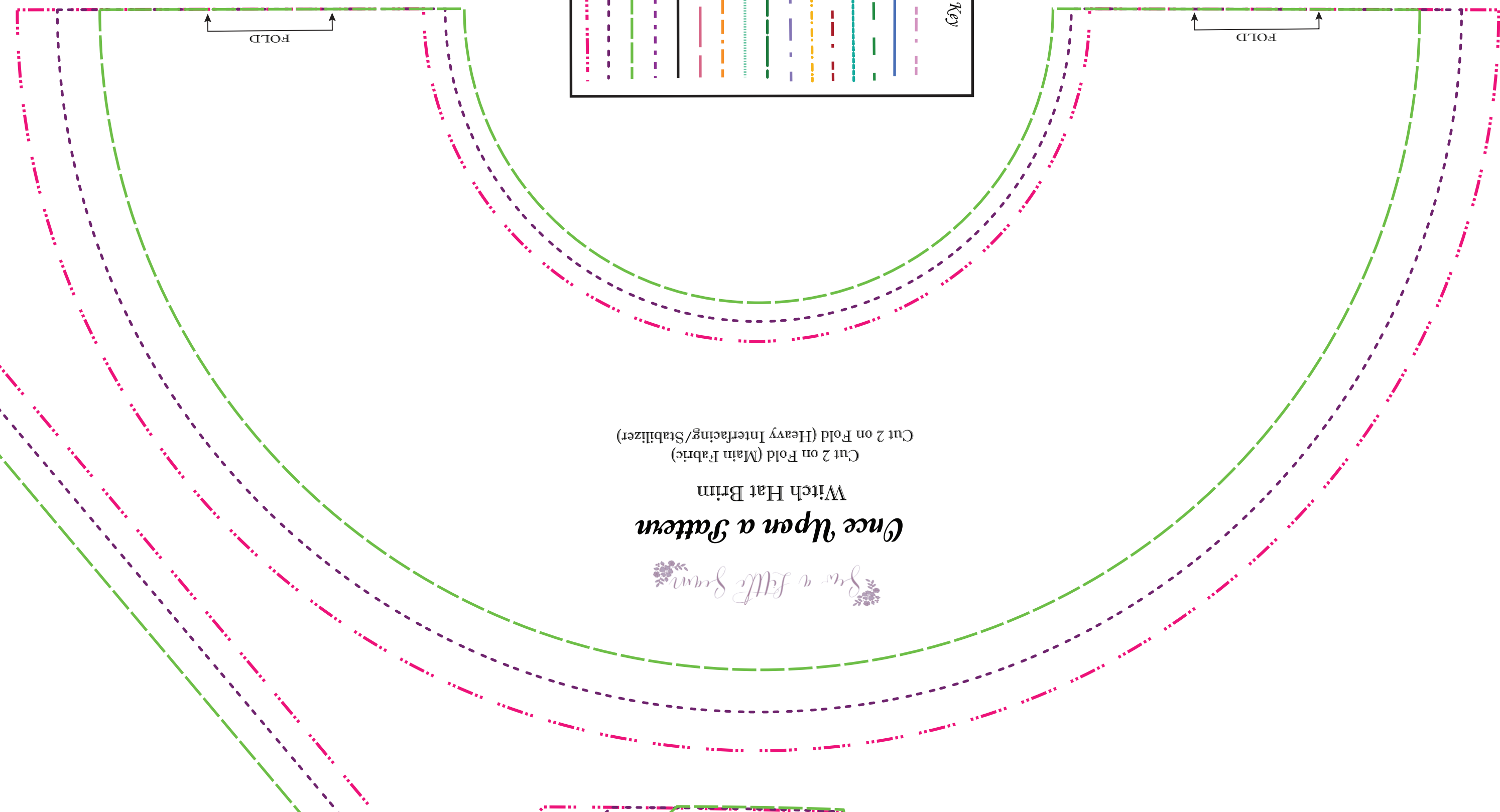


Printers, please allow customers who own this pattern to print this PDF.



Size Key	Color
9 Mo	Blue
12 Mo	Green
18 Mo	Yellow
2	Pink
3	Orange
4	Red
5	Light Blue
6	Light Green
7	Light Yellow
8	Light Pink
10	Light Orange
12	Light Red
14	Light Purple
16	Light Blue
18	Light Green
20	Light Yellow
22	Light Pink
24	Light Orange
26	Light Red
28	Light Blue
30	Light Green
32	Light Yellow
34	Light Pink
36	Light Orange
38	Light Red
40	Light Blue
42	Light Green
44	Light Yellow
46	Light Pink
48	Light Orange
50	Light Red



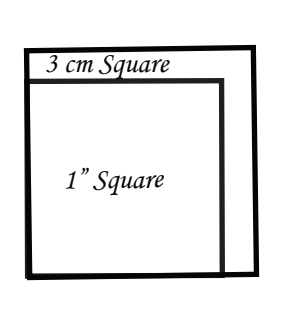
See a Little Sewing
Once Upon a Pattern
 Cape Hood

Cut 2 Mirror Images (Main Fabric)
 Cut 2 Mirror Images (Lining)



Size Key

9 Mo	---
12 Mo	---
18 Mo	---
2	---
3	---
4	---
5	---
6	---
7	---
8	---
10	---
12	---
14	---
SM	---
MD	---
LG	---



(See tutorial for notes on full length sizes that don't fit on the fold)
 Repeat for Lining (not required)
 Cut 2 Mirror Images for Front
 Cut 1 on Fold for Back
 Cape

See a Little Sewing
Imagine
 Cape

